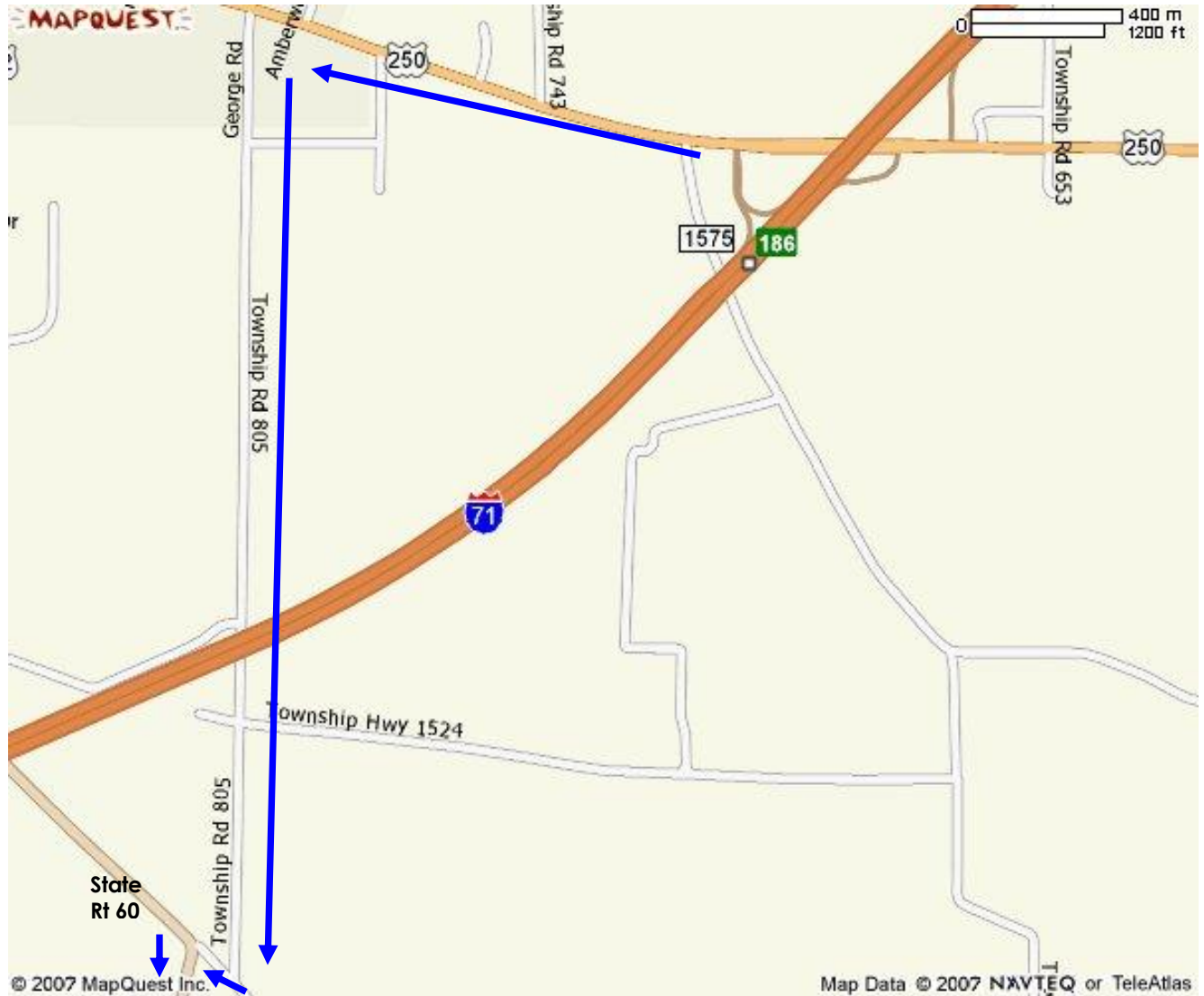


# Directions to The Entrance of the Theotokos Skete

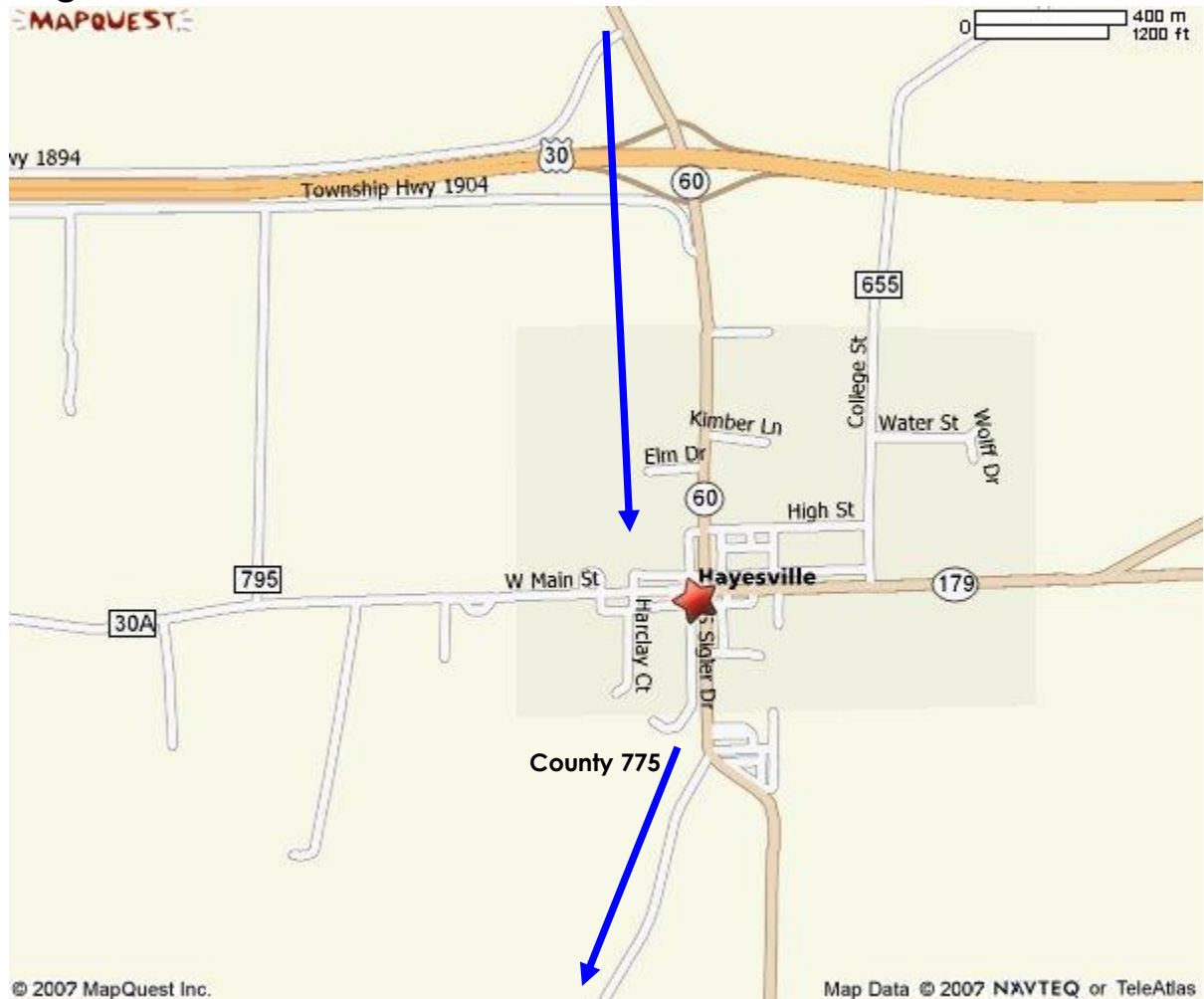
Page 1 of 3



I-271 South to I-71 south to exit 186 Ashland Route 250 West  
Approximately 4 lights to George Road **(TURN LEFT)**  
Take George Road until it hits a dead end **(TURN RIGHT)**  
To State Route 60 South **(TURN LEFT)**

## Directions to The Entrance of the Theotokos Skete

Page 2 of 3



Continue on State Route 60 South into Hayesville (appx 3-4 miles)

Go through the town. Route 60 will turn to the left and County 775 will go right (approximately 2/10<sup>th</sup> of a mile after Main Street).

**TURN RIGHT ONTO CTY 775 SOUTH**, there is a Nursery on your right at this junction

## Directions to The Entrance of the Theotokos Skete

Page 3 of 3



Continue on County 775 South. You will pass:  
Township Road 2104, then you will pass Township Road 2206

### DIRECTIONS TO THE SKETE OF THE THEOTOKOS

Do not turn right on Road 2256 but continue straight on Road 775 about  $\frac{1}{4}$  mile past Road 2256 there will be a driveway on the right hand side. The Entrance of the Theotokos Skete is all the way back up the driveway (white house and out white buildings).